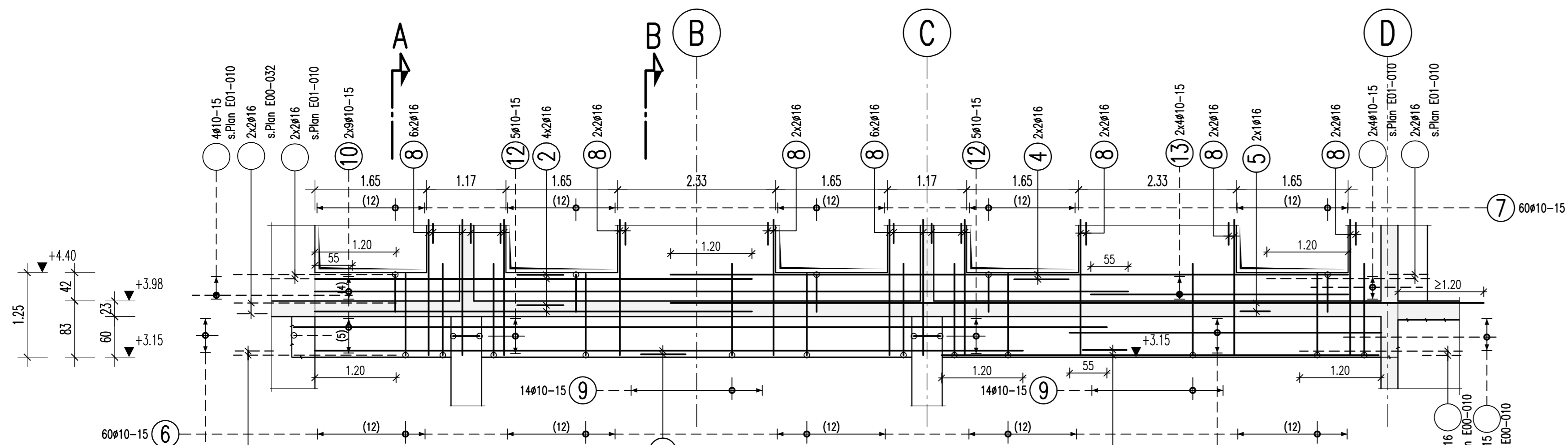
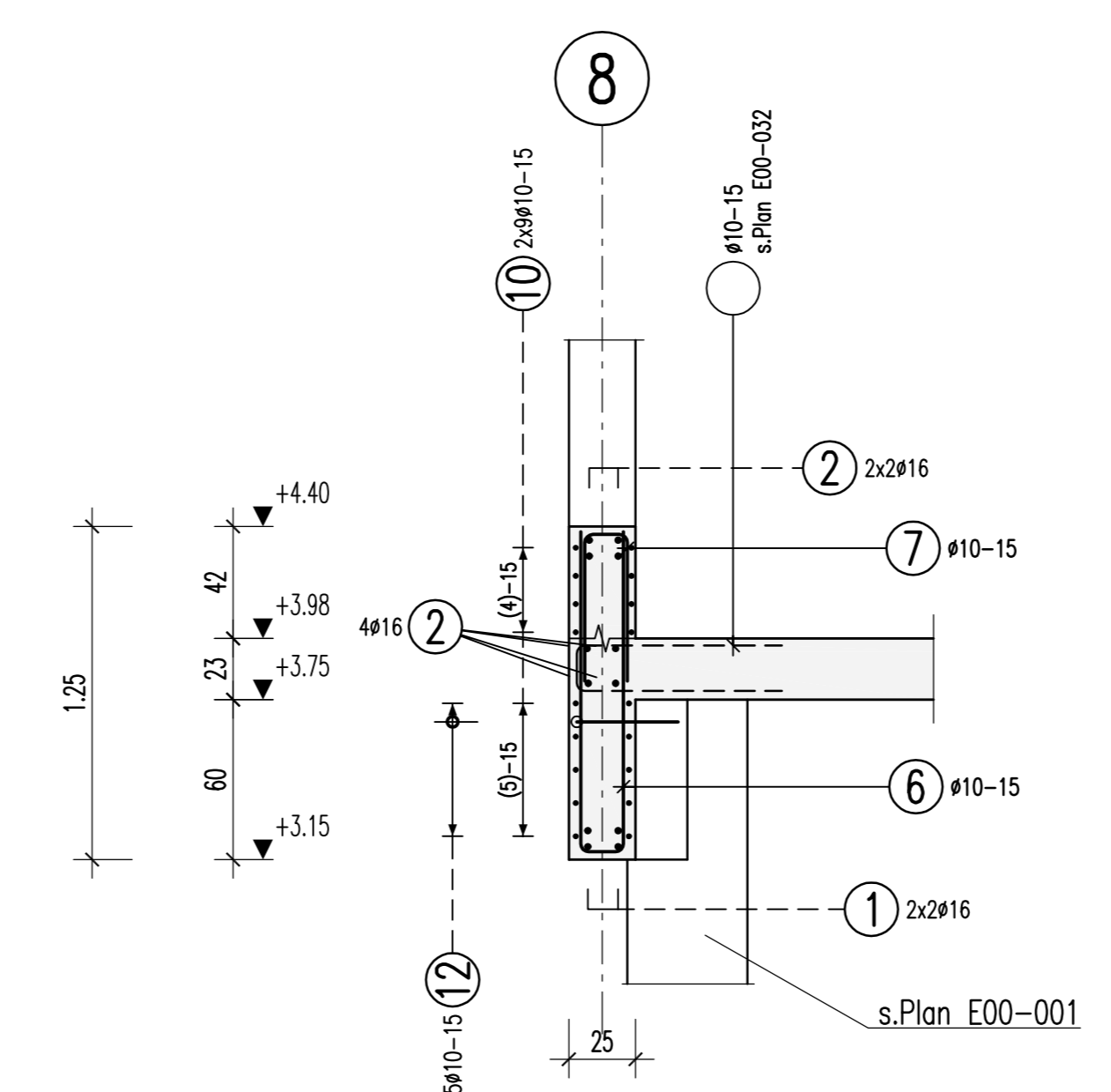


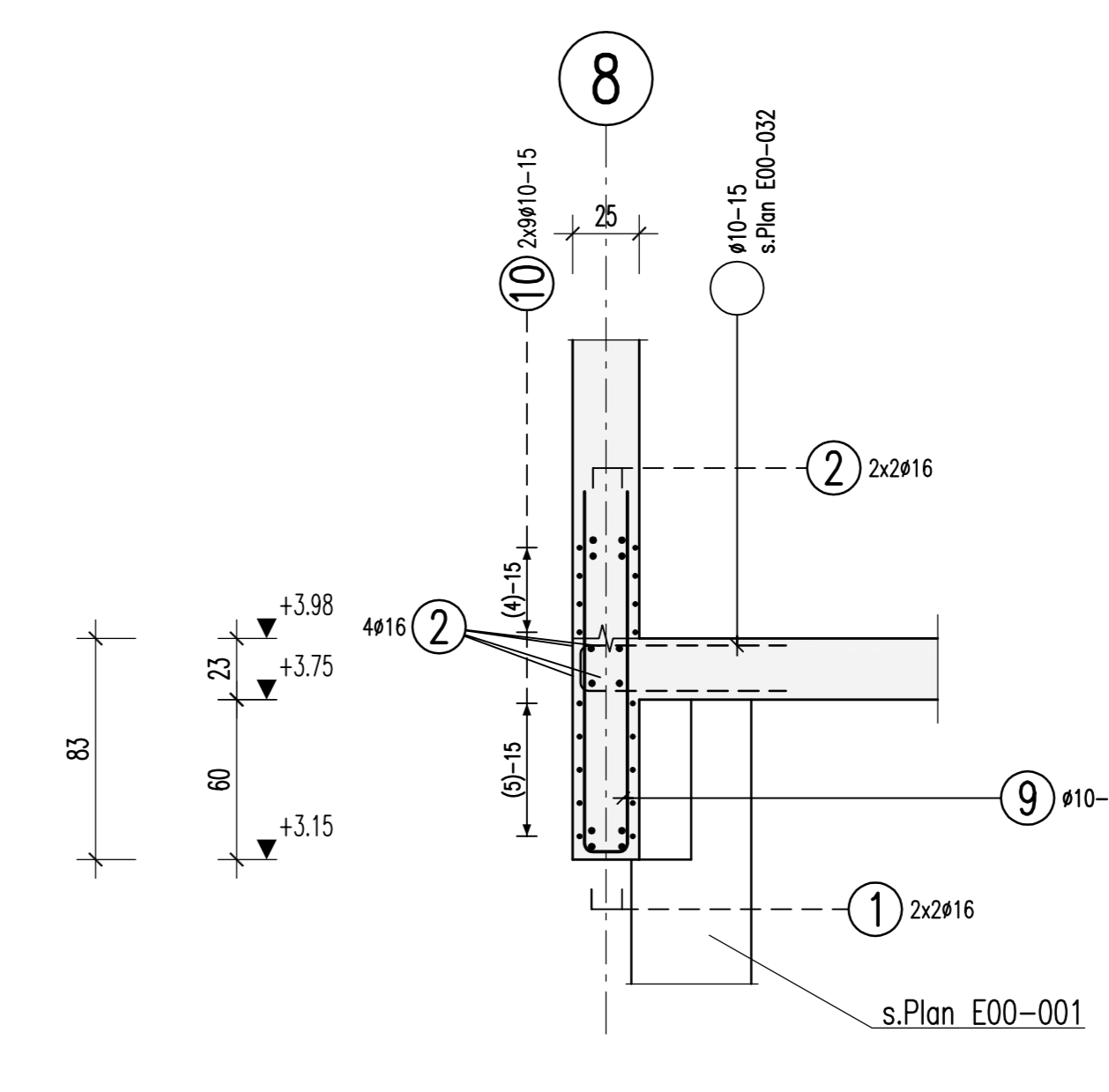
UZ-4, Achse UB-D/8
b/d=25/83
M 1:50



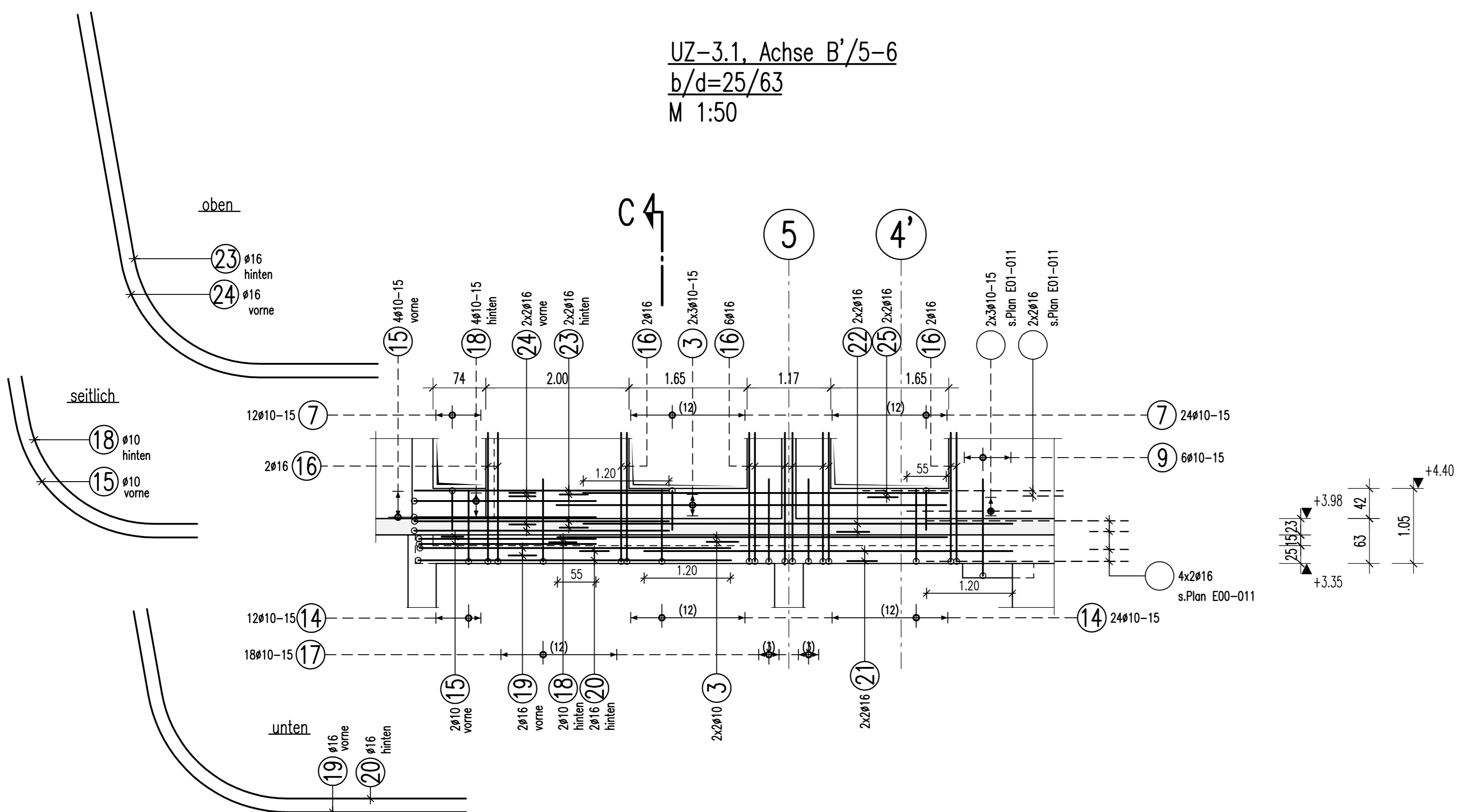
Schnitt A-A
M 1:25



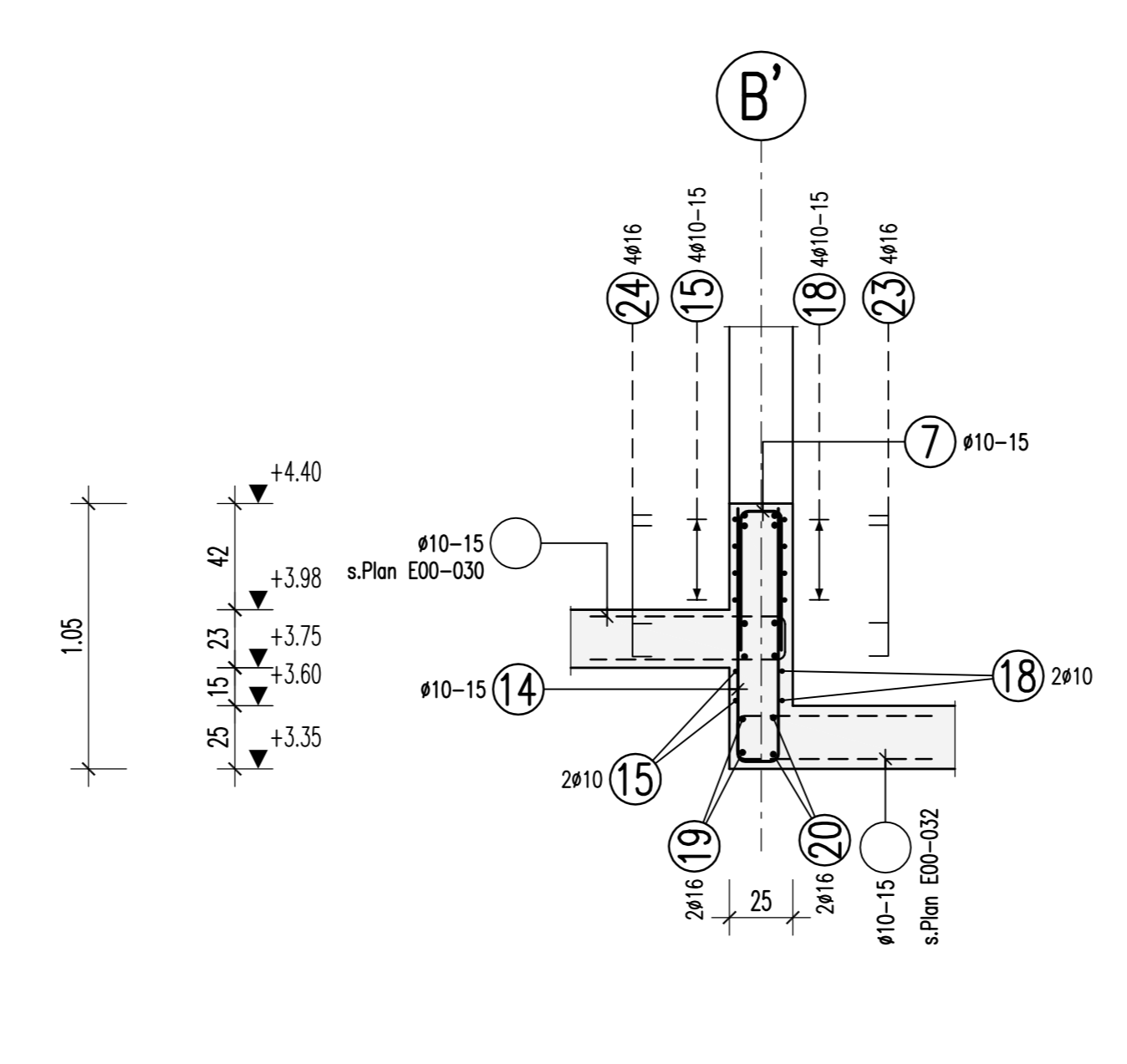
Schnitt B-B
M 1:25



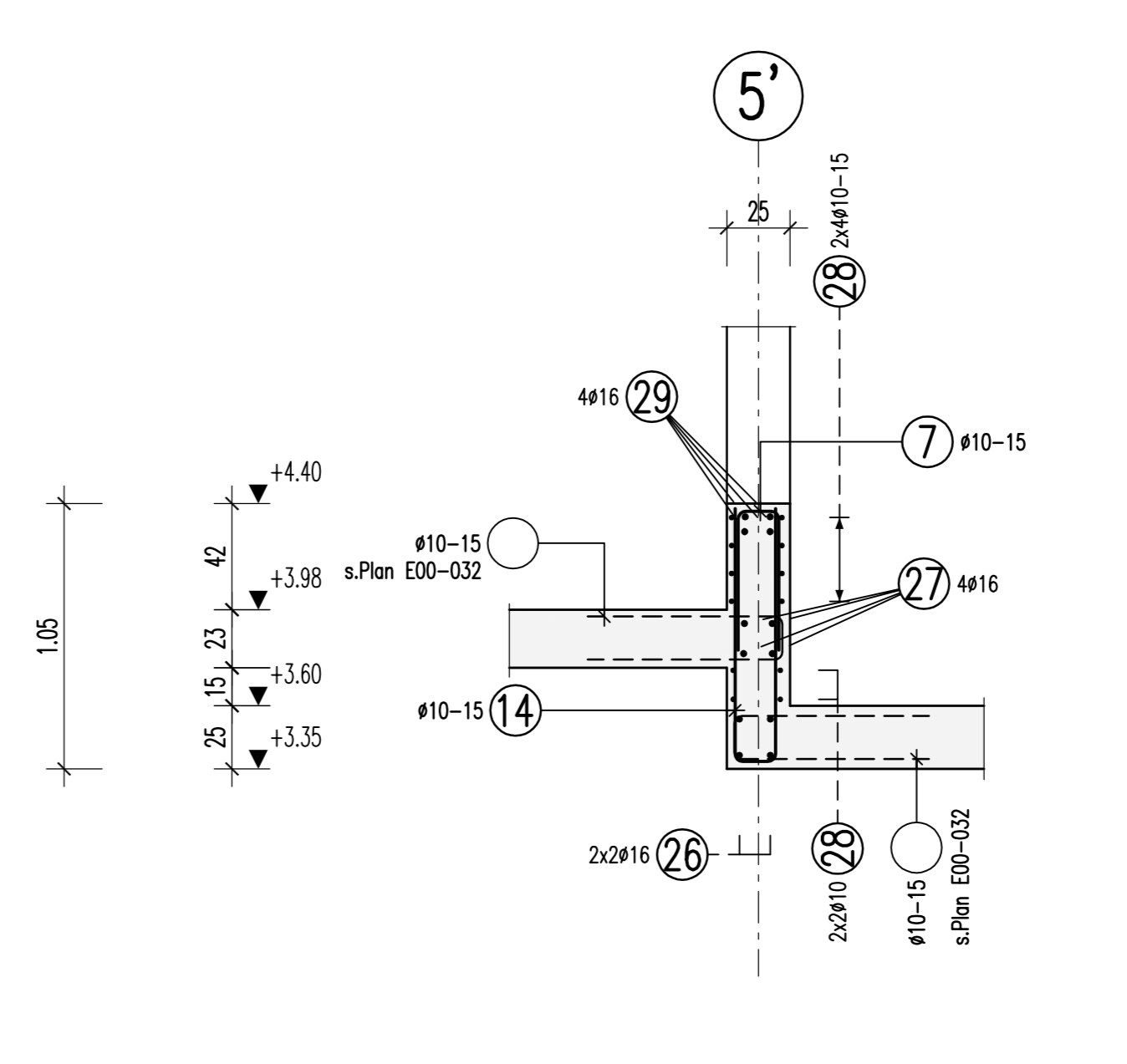
UZ-3.1, Achse B'/5-6
b/d=25/63
M 1:50



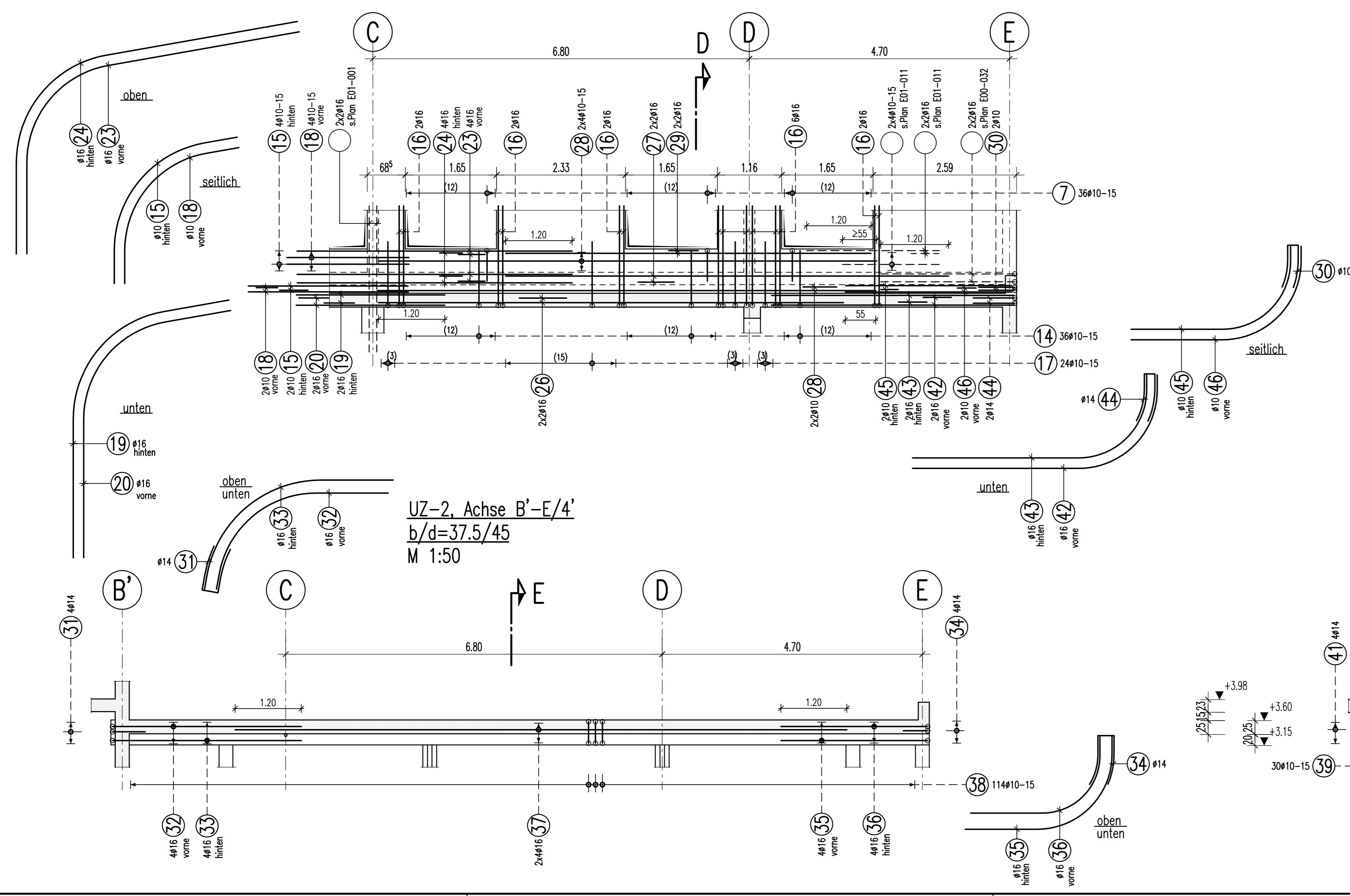
Schnitt C-C
M 1:25



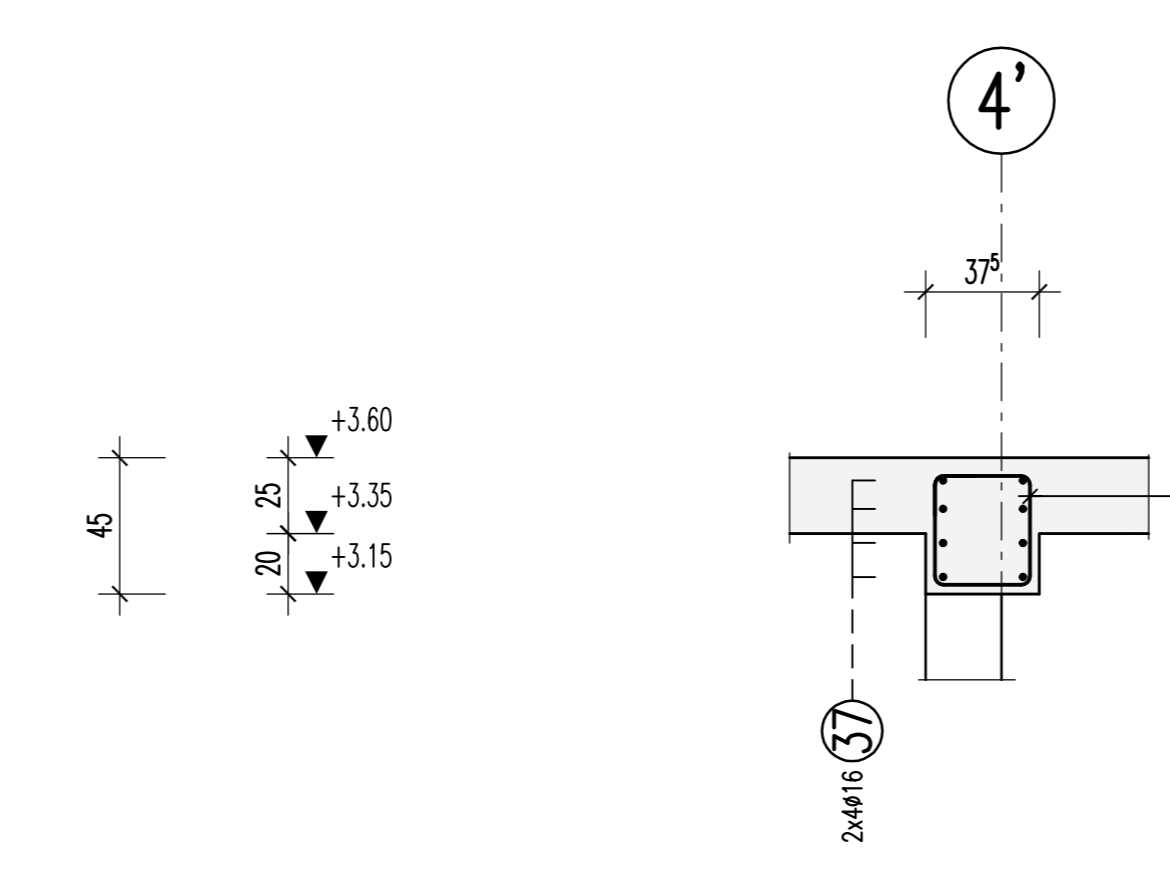
Schnitt D-D
M 1:25



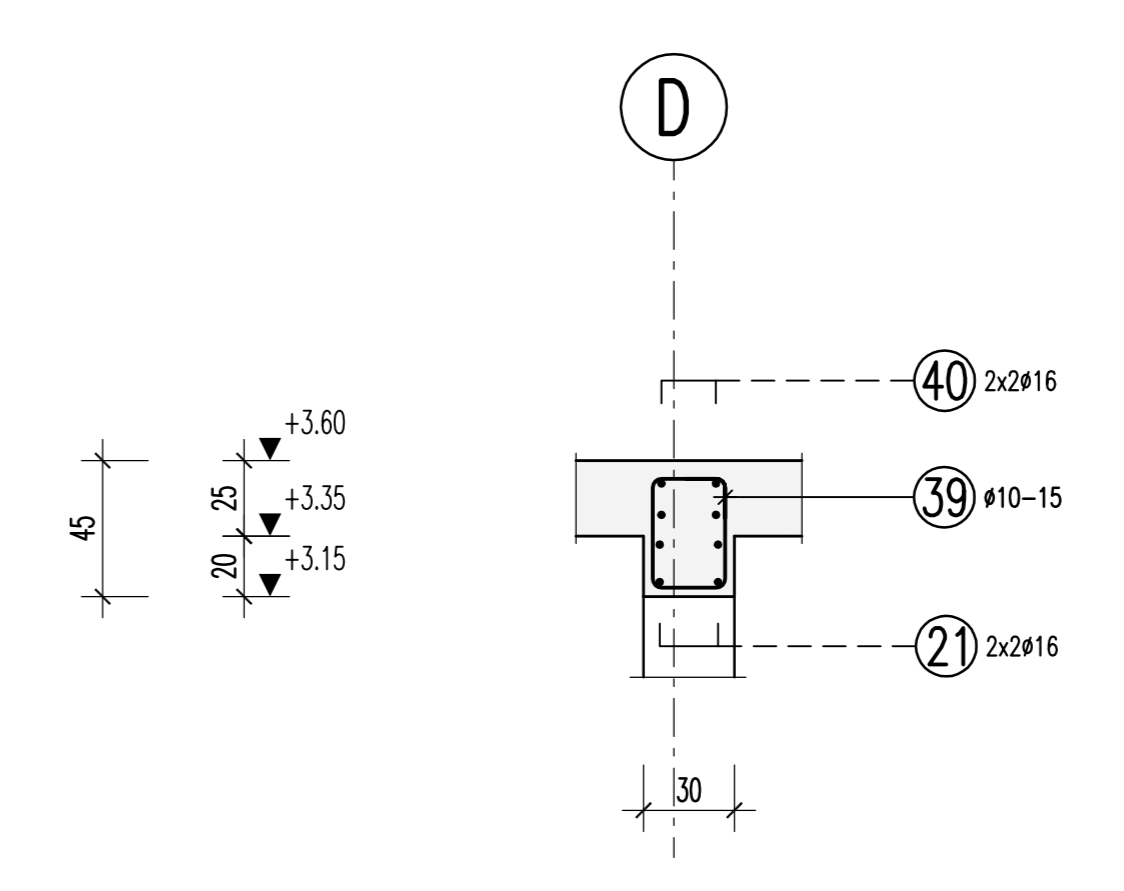
UZ-3, Achse C-E/5'
b/d=25/63
M 1:50



Schnitt E-E
M 1:25

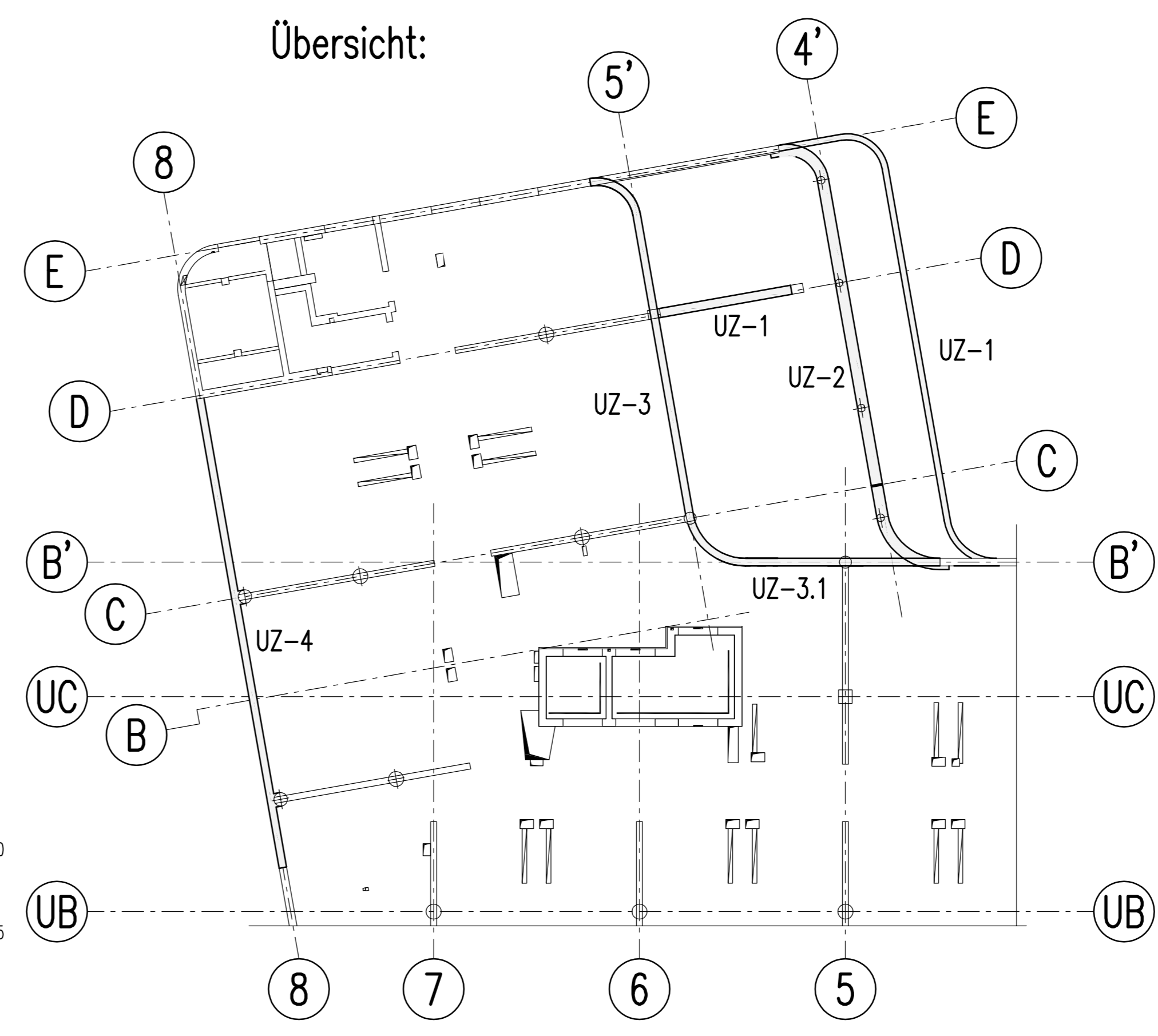


Schnitt F-F
M 1:25



UZ-2, Achse B'-E/4'
b/d=37.5/45
M 1:50

UZ-1, Achse D/4'-5'
b/d=37.5/45
M 1:50



BIEGE- UND VERLEGEANWEISUNG
gemäß DIN EN 1992-1-1/Na:2011-01 Tabelle NA.8.1 DE

| Mindestwerte der Betondeckung rechnerisch zur Biegeebene | Stab # | Betondeckung c_t (mm) |
|--|-----------|-------------------------|
| $>10c_m$, $>7d_s$ | $>3d_s$ | < 20 |
| $10c_m$ | $15d_s$ | ≥ 20 |
| $<5c_m$, $\leq 3d_s$ | ≥ 20 | $4d_s$ |
| $20d_s$ | ≥ 20 | $7d_s$ |

Alle Maße der Betonstahlansätze sind Außenmaße!

| Bauteil | BSL 500 S (B) und BSL 500 M (A) | | Druckfestigkeitsklasse | |
|----------|---------------------------------|------------|------------------------|------------|
| | außen/unten | innen/oben | außen/unten | innen/oben |
| UZ ü. EG | XC1 | XC1 | C 30/37 | 30 |

Dieser Plan ist nur gültig in Verbindung mit:
Schalplan: TWP-5-A-SL-E00-200-01

| | | | | | |
|-------------------|------------------|------------------|-------------------|------------------|------------------|
| 1) #16 L=10.45 m | 2) #16 L=6.45 m | 3) #16 L=5.45 m | 4) #16 L=10.00 m | 5) #16 L=12.00 m | 6) #16 L=2.56 m |
| 7) #16 L=1.26 m | 8) #16 L=2.00 m | 9) #16 L=2.86 m | 10) #16 L=12.00 m | 11) #16 L=4.60 m | 12) #16 L=1.15 m |
| 13) #16 L=3.80 m | 14) #16 L=2.16 m | 15) #16 L=3.95 m | 16) #16 L=3.75 m | 17) #16 L=2.46 m | 18) #16 L=3.69 m |
| 19) #16 L=6.45 m | 20) #16 L=6.19 m | 21) #16 L=5.15 m | 22) #16 L=6.00 m | 23) #16 L=7.64 m | 24) #16 L=7.90 m |
| 25) #16 L=5.10 m | 26) #16 L=9.40 m | 27) #16 L=6.00 m | 28) #16 L=6.80 m | 29) #16 L=1.73 m | 30) #16 L=1.73 m |
| 31) #16 L=1.93 m | 32) #16 L=4.06 m | 33) #16 L=4.50 m | 34) #16 L=2.09 m | 35) #16 L=3.76 m | 36) #16 L=3.27 m |
| 37) #16 L=11.05 m | 38) #16 L=1.61 m | 39) #16 L=4.46 m | 40) #16 L=1.81 m | 41) #16 L=1.71 m | 42) #16 L=5.50 m |
| 43) #16 L=5.20 m | 44) #16 L=1.93 m | 45) #16 L=3.85 m | 46) #16 L=4.15 m | 47) #16 L=... | 48) #16 L=... |
| 49) #16 L=... | 50) #16 L=... | 51) #16 L=... | 52) #16 L=... | 53) #16 L=... | 54) #16 L=... |

Freigabe
Am 17.07.2017 vom
Prüfingenieur freigegeben.

| PROJEKT | PRÄGE | BÄTTEL | PLANYP | ÜBERSICHTSZEICHNUNG | LAUFZEICHEN | ZEICHNUNG |
|---------|-------|--------|--------|---------------------|-------------|-----------|
| TWP | 5 | 0 | BW | E00 | 034 | 01 |

±0.00 = +112.25 ub.NN

PROJEKT: Neubau eines Hotels mit 392 Betten auf vorhandener Tiefgarage sowie deren Erweiterung um 31 Stellplätze
ZEICHNUNG: AUSFÜHRUNGSPLANUNG - BEWEHRUNGSPLAN
Decke über EG, Unterzüge, Achse UB-E / 4'-8