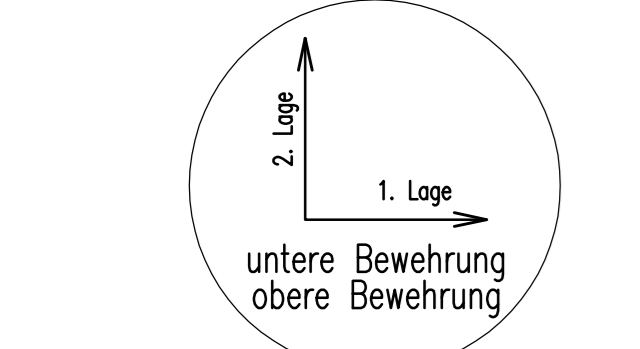
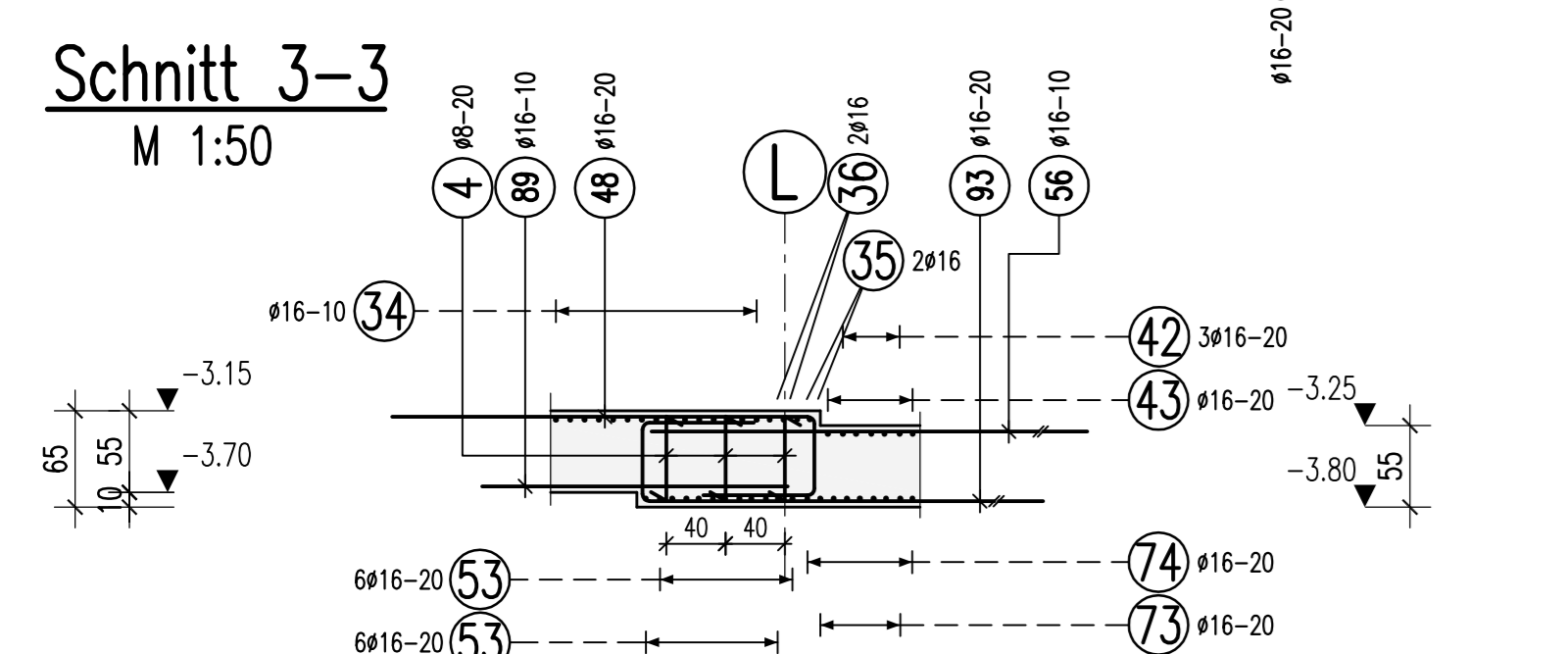
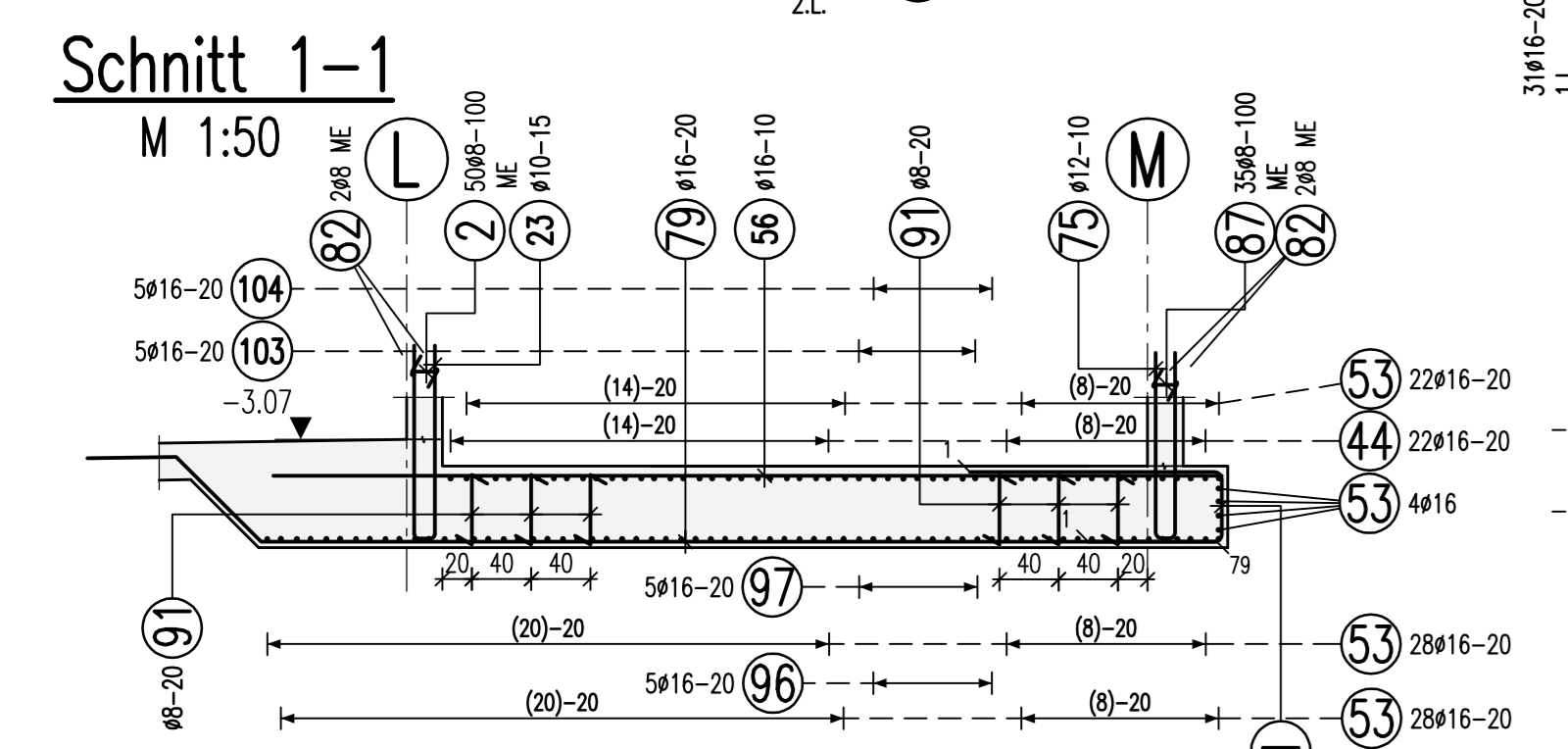
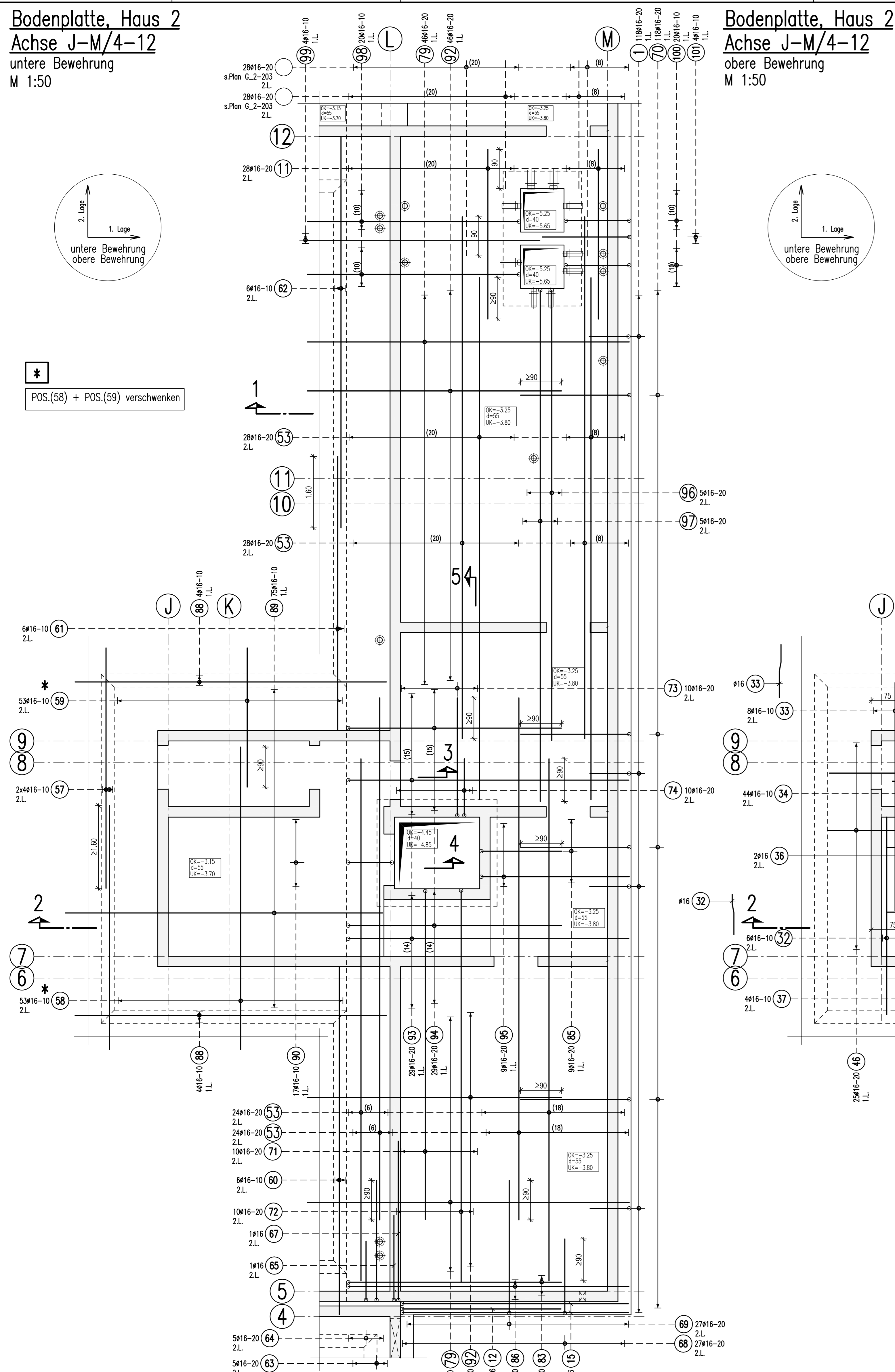


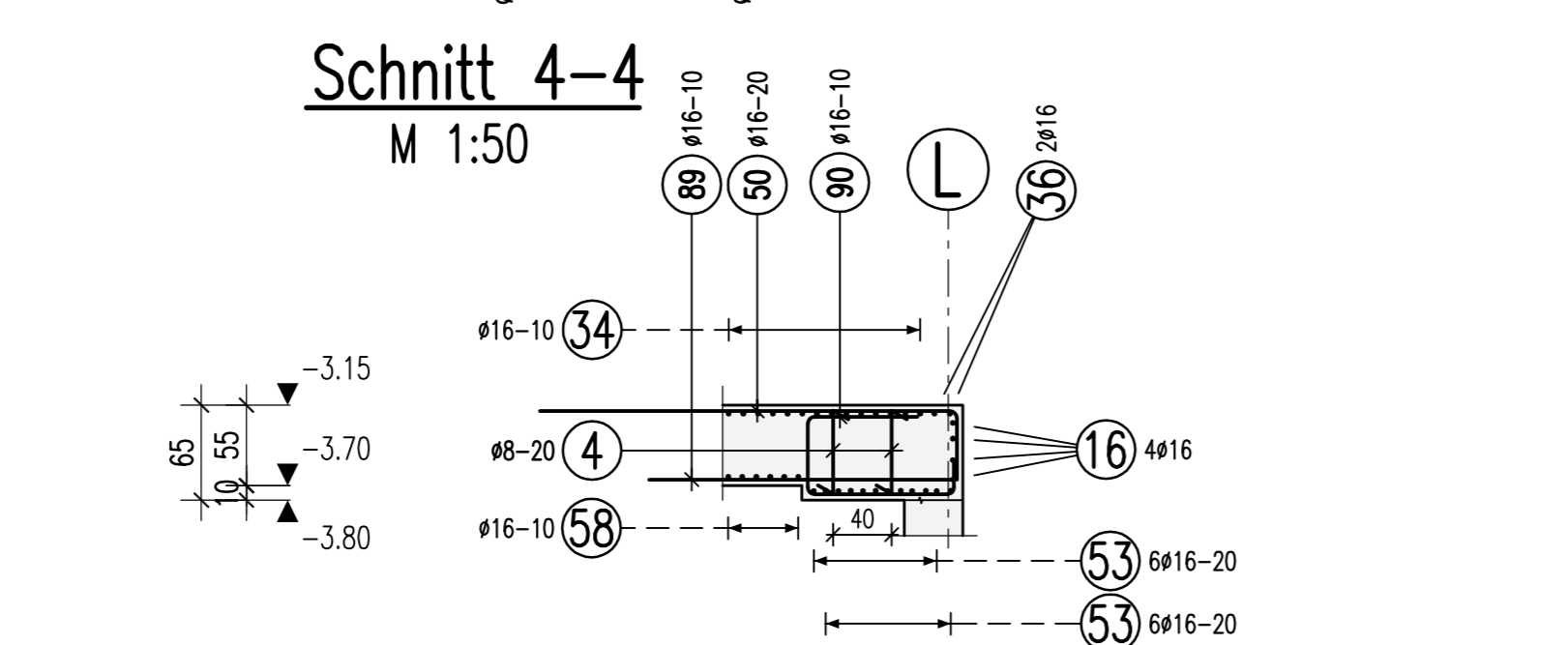
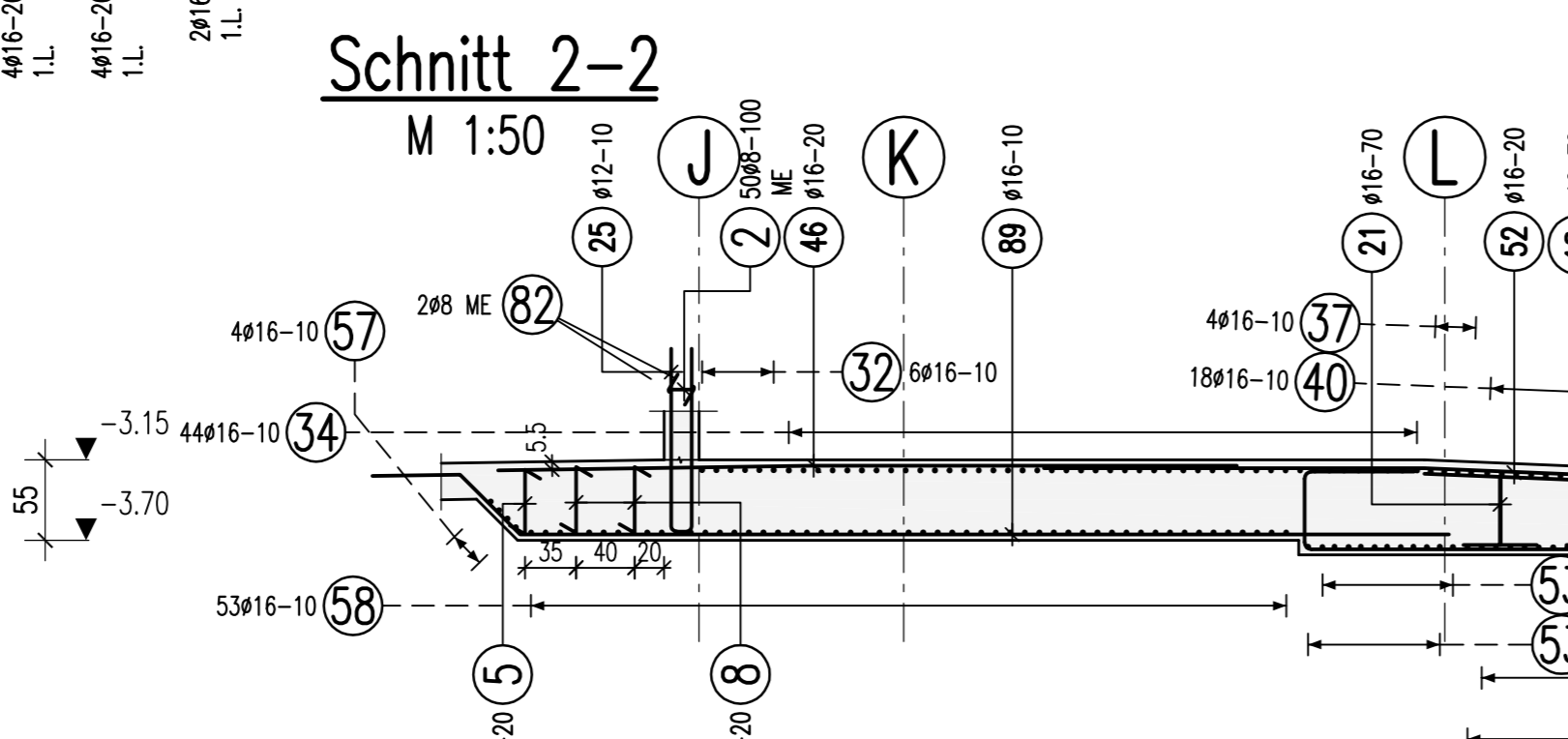
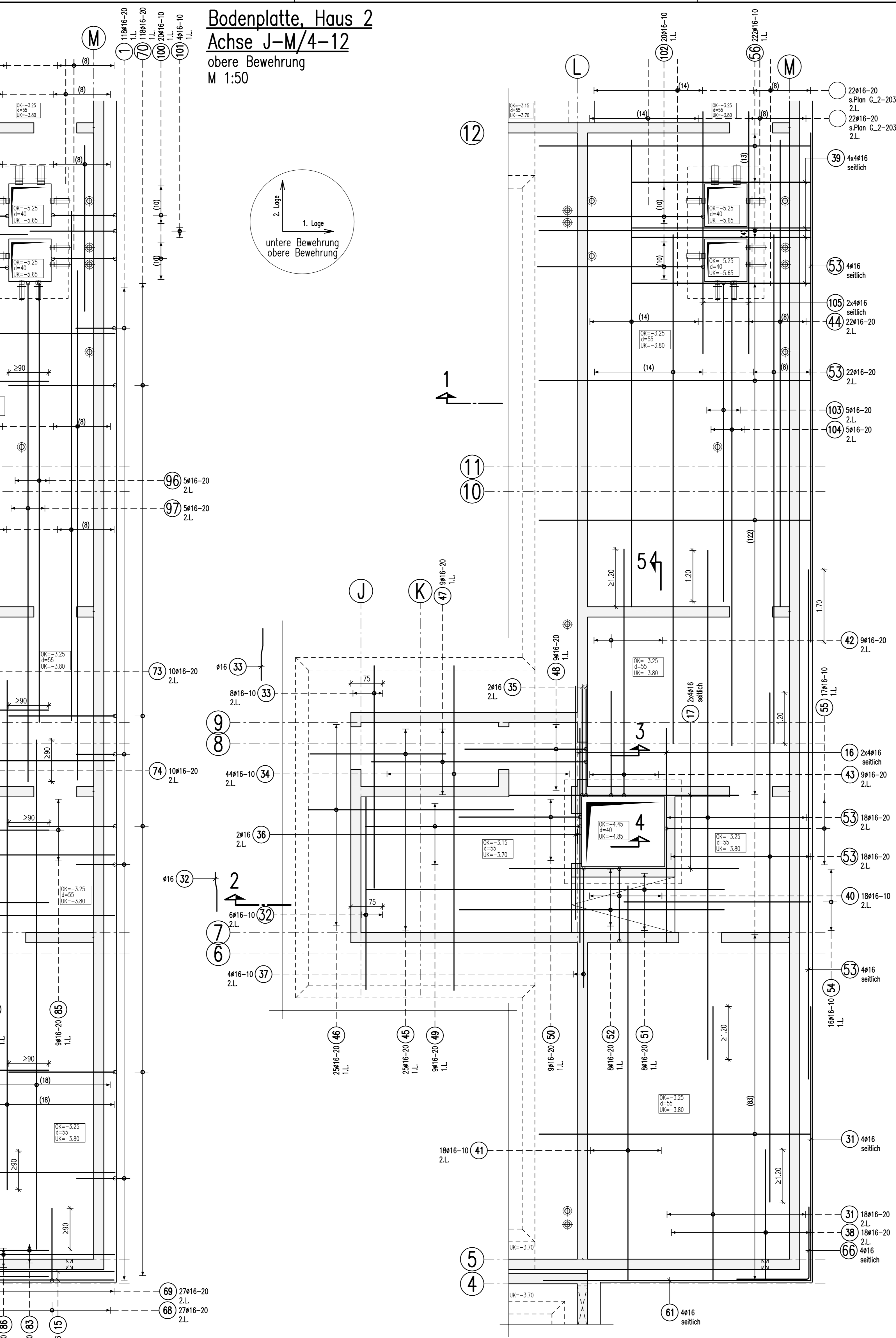
**Bodenplatte, Haus 2**  
Achse J-M/4-12  
untere Bewehrung  
M 1:50



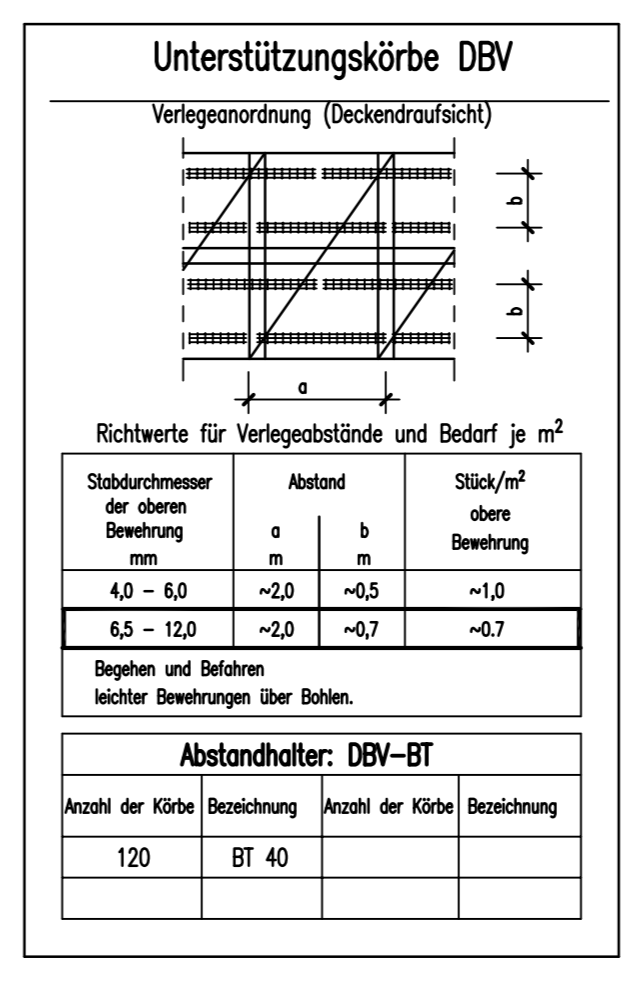
\* POS.(58) + POS.(59) verschwenken



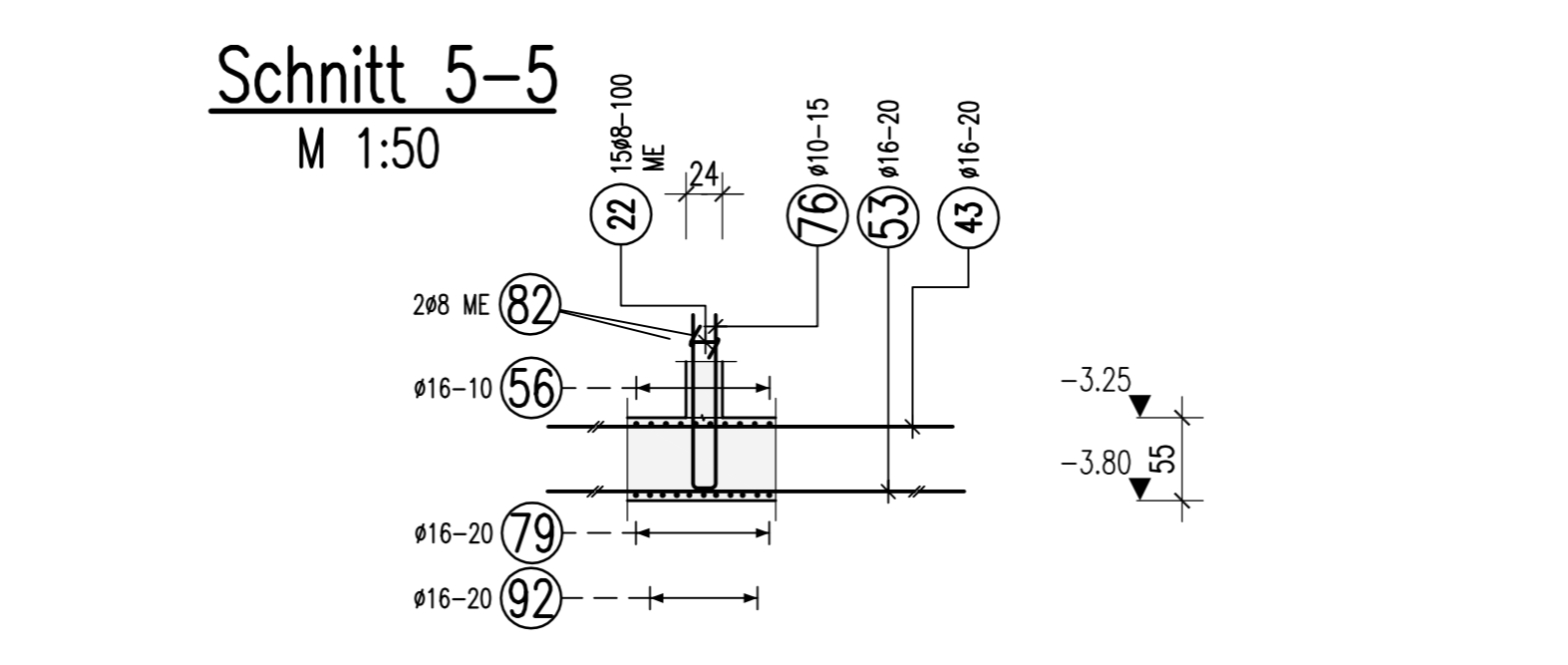
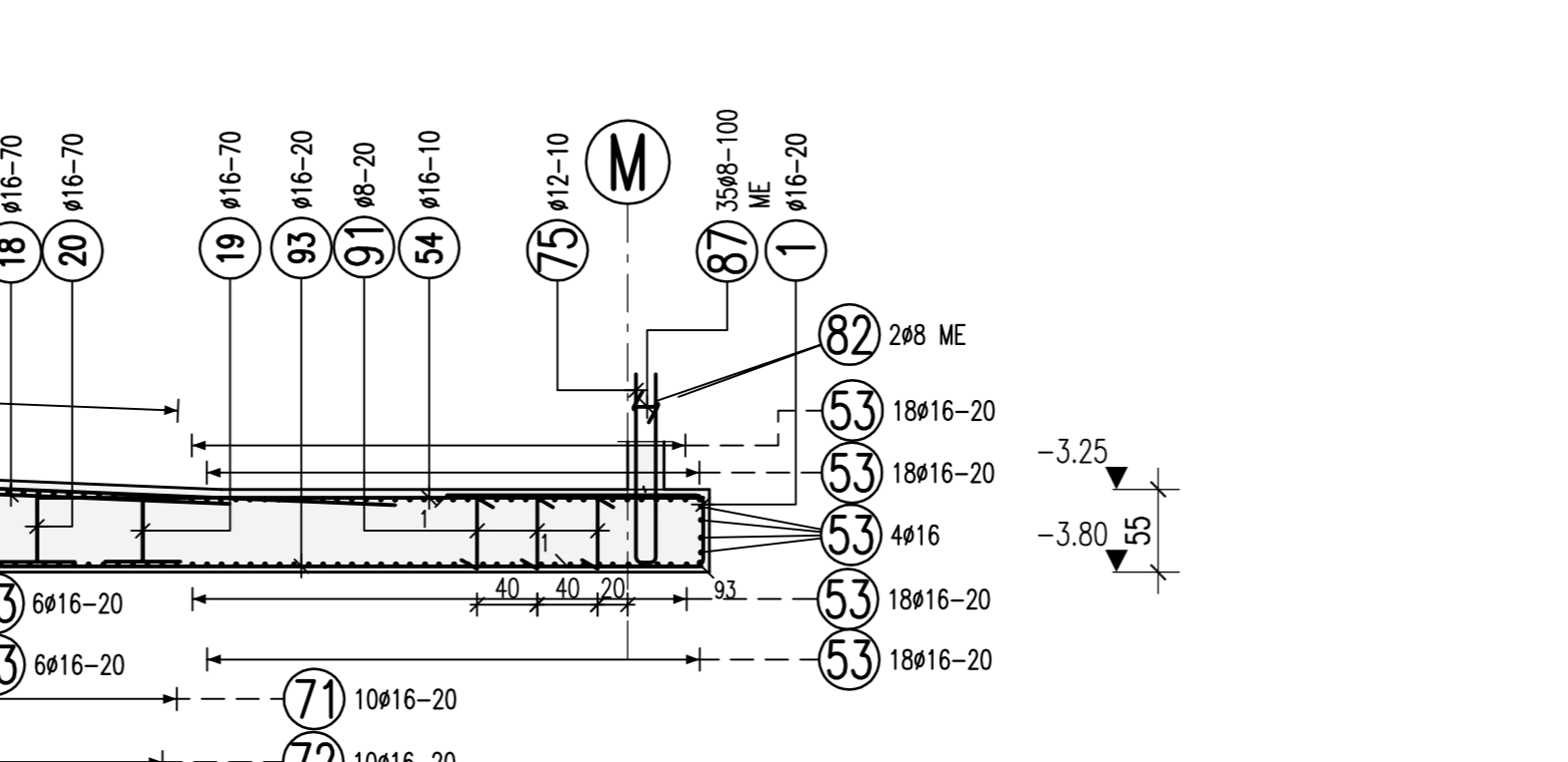
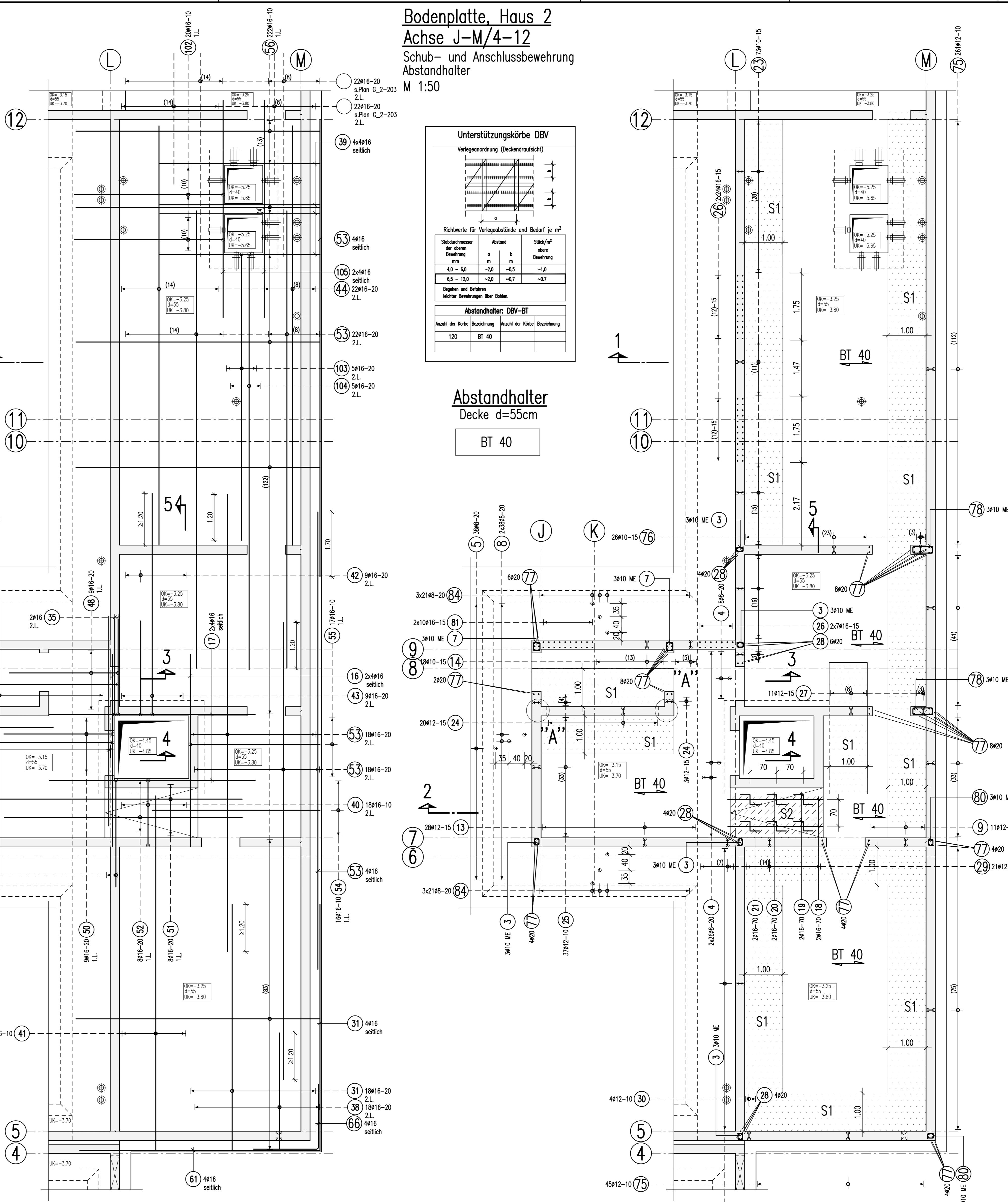
**Bodenplatte, Haus 2**  
Achse J-M/4-12  
obere Bewehrung  
M 1:50



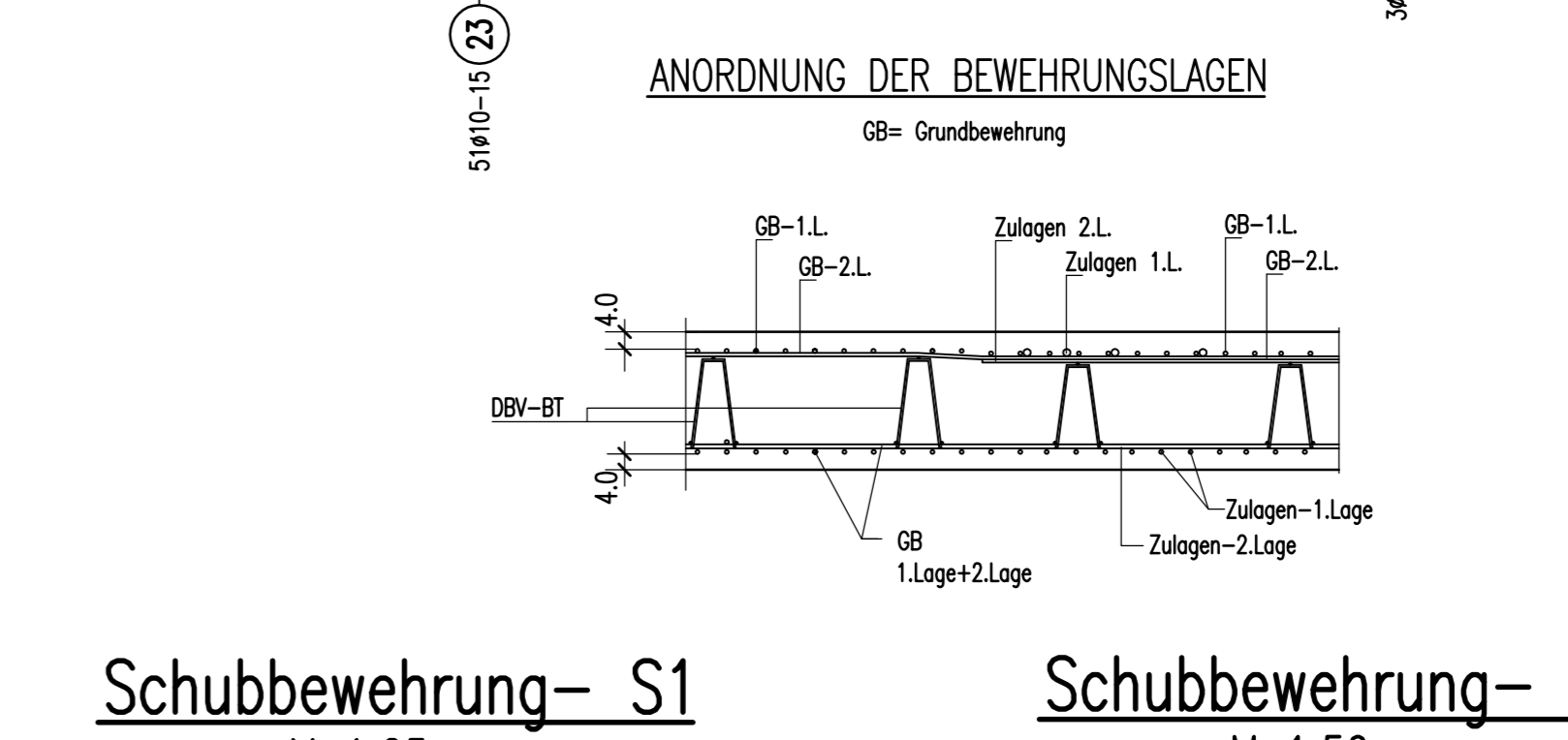
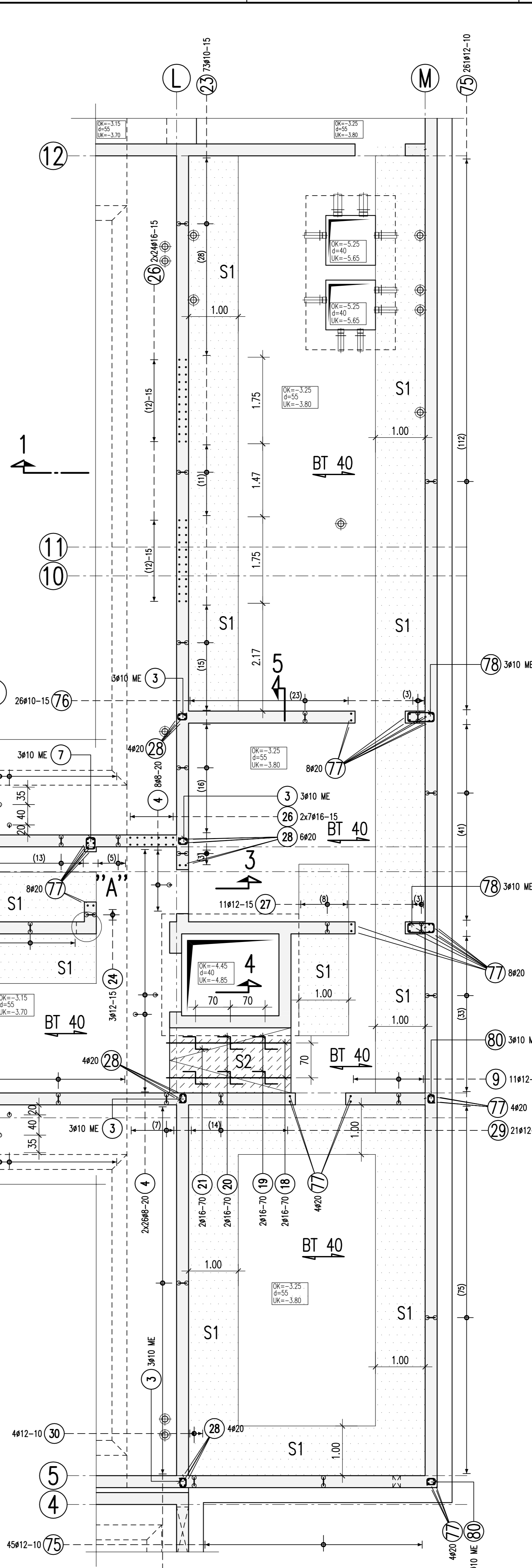
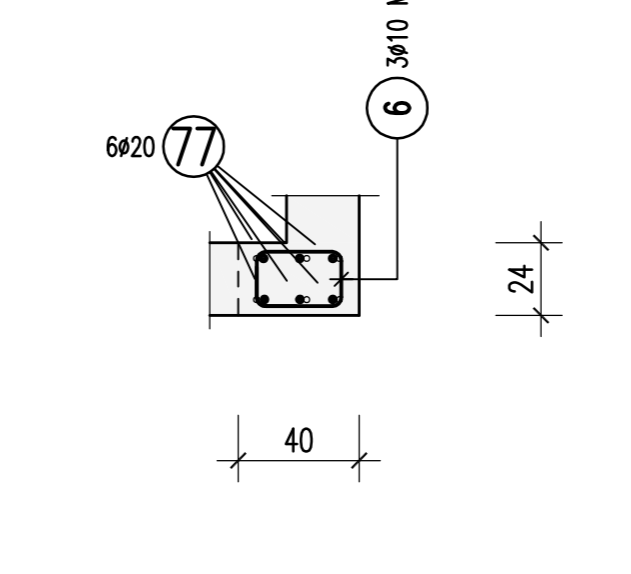
**Bodenplatte, Haus 2**  
Achse J-M/4-12  
Schub- und Anschlussbewehrung  
Abstandhalter  
M 1:50



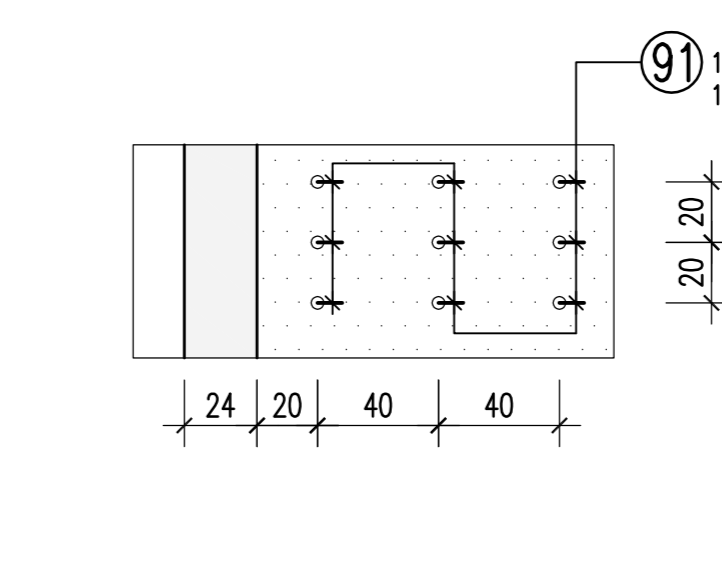
Abstandhalter  
Decke d=55cm  
BT 40



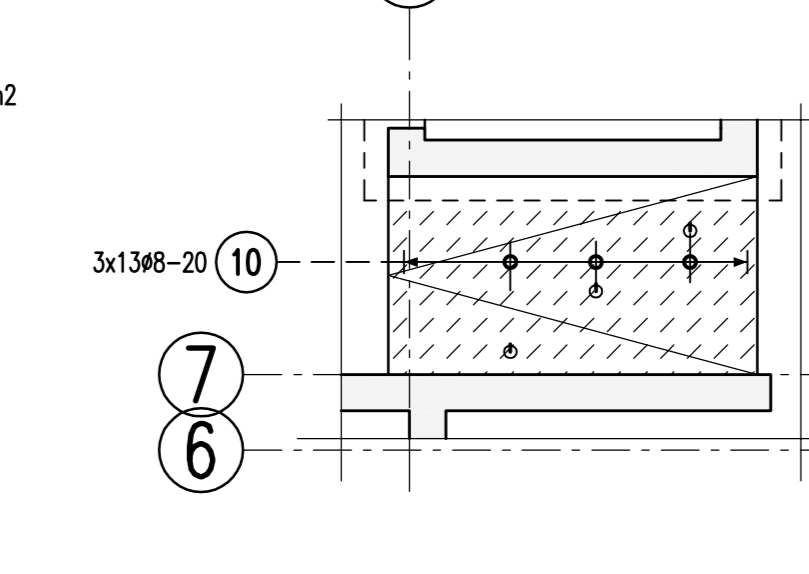
Detail "A"  
2 x vorh.  
M 1:25



Schubbewehrung- S1  
M 1:25



Schubbewehrung- S2  
M 1:50



**BIEGE- UND VERLEGEANWEISUNG**  
BIEGEROLLENDURCHMESSER  $d_{st}$  gemäß DIN EN 1992-1-1/Na2011-01 Tabelle NA.8.1 DE

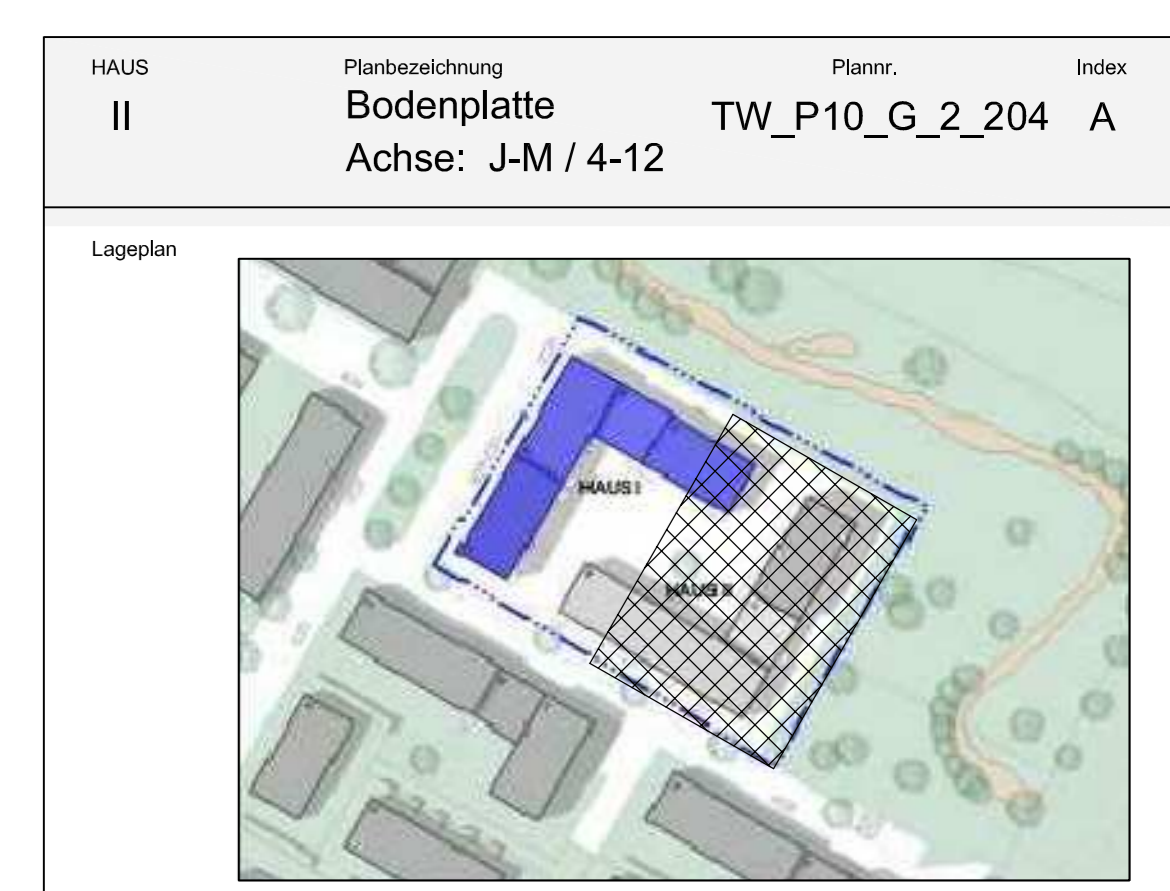
Mindestwerte der Betondeckung rechnerisch zur Biegebene  
>10cm, >7d<sub>st</sub>, >3d<sub>st</sub>, >5cm, >3d<sub>st</sub>, <5cm, <3d<sub>st</sub>  
10 d<sub>st</sub>, 15 d<sub>st</sub>, 20 d<sub>st</sub>

Alle Maße der Betonstahlauszüge sind Außenmaße!

Betonstahl	BSt. 500 S (B) und BSt. 500 M (A)	Betondeckung c <sub>st</sub> (mm)
Bauteil	Expositionsklasse	Druckfestig-keitsklasse
Bodenplatte	XC2, XF1	XC2, XF1
		C 30/37 WU
		40
		40
		40

Dieser Plan ist nur gültig in Verbindung mit:  
TW\_P09\_G\_2\_002\_B 06.06.2016

1	11#16 L=3.07 m	2	50#8 L=0.41 m	3	15#10 L=0.84 m	4	60#8 L=0.81 m	5	30#8 L=0.68 m	6	6#10 L=1.18 m	7	6#10 L=1.04 m
8	70#8 L=0.69 m	9	11#12 L=2.54 m	10	30#8 L=0.68 m	11	20#16 L=2.54 m	12	19#16 L=2.74 m	13	13#10 L=2.54 m	14	18#10 L=2.54 m
15	20#16 L=2.54 m	16	8#16 L=3.05 m	17	8#16 L=3.05 m	18	20#16 L=2.54 m	19	20#16 L=2.54 m	20	20#16 L=2.54 m	21	20#16 L=2.54 m
22	15#8 L=2.94 m	23	12#10 L=2.74 m	24	24#12 L=2.55 m	25	27#12 L=2.55 m	26	20#16 L=2.55 m	27	11#12 L=2.55 m	28	20#20 L=2.4 m
29	21#12 L=2.94 m	30	4#12 L=2.93 m	31	22#16 L=6.45 m	32	6#16 L=4.55 m	33	8#16 L=4.55 m	34	4#16 L=7.85 m	35	20#16 L=3.03 m
36	20#16 L=5.50 m	37	4#16 L=3.05 m	38	18#16 L=3.05 m	39	16#16 L=3.05 m	40	18#16 L=3.05 m	41	18#16 L=3.05 m	42	20#16 L=2.88 m
43	20#16 L=6.23 m	44	22#16 L=11.00 m	45	25#16 L=3.45 m	46	25#16 L=3.45 m	47	16#16 L=5.05 m	48	16#16 L=5.05 m	49	20#16 L=5.52 m
50	20#16 L=3.32 m	51	8#16 L=6.20 m	52	8#16 L=6.20 m	53	170#16 L=12.00 m	54	16#16 L=4.40 m	55	17#16 L=3.87 m	56	22#20 L=6.40 m
57	20#16 L=6.58 m	58	53#16 L=2.32 m	59	53#16 L=2.32 m	60	6#16 L=8.00 m	61	10#16 L=6.30 m	62	8#16 L=9.00 m	63	20#16 L=3.90 m
64	20#16 L=2.50 m	65	16#16 L=3.15 m	66	16#16 L=3.40 m	67	16#16 L=4.86 m	68	27#16 L=5.18 m	69	27#16 L=5.18 m	70	19#16 L=4.67 m
71	13#16 L=7.88 m	72	10#16 L=9.13 m	73	10#16 L=8.23 m	74	10#16 L=1.43 m	75	30#12 L=2.63 m	76	60#10 L=2.85 m	77	20#20 L=2.30 m
78	20#16 L=1.86 m	79	77#16 L=7.86 m	80	6#10 L=0.82 m	81	20#16 L=2.03 m	82	16#16 L=12.00 m	83	16#16 L=6.23 m	84	120#8 L=0.76 m
85	20#16 L=1.98 m	86	4#16 L=7.78 m	87	35#8 L=0.40 m	88	16#16 L=7.42 m	89	17#16 L=7.53 m	90	17#16 L=7.53 m	91	110#8 L=0.71 m
92	77#16 L=6.3 m	93	20#16 L=7.73 m	94	20#16 L=6.18 m	95	16#16 L=3.53 m	96	16#16 L=10.48 m	97	5#16 L=11.88 m	98	20#16 L=5.52 m
99	4#16 L=5.81 m	100	20#16 L=4.28 m	101	4#16 L=1.17 m	102	20#16 L=4.37 m	103	5#16 L=11.33 m	104	5#16 L=11.33 m	105	20#16 L=5.70 m
106	20#16 L=5.70 m	107	20#16 L=5.70 m	108	20#16 L=5.70 m	109	20#16 L=5.70 m	110	20#16 L=5.70 m	111	20#16 L=5.70 m	112	20#16 L=5.70 m



HAUS II  
Planbezeichnung: Bodenplatte TW\_P10\_G\_2\_204 A  
Achse: J-M / 4-12  
Projekt: NEUBAU ZWEIER WOHNHÄUSER MIT TIEFGARAGE - GUTLEHMMÄTTER D, ARNE TORGENSEN STR., FREIBURG  
Planm.: 06/04/12  
Inde.: 06/06/2016

**Bewehrungsplanung**